

Pashmina

Shawl Suit



D.NO-1501

Pashmina

Shawl Suit



D.NO-1506

Pashmina

Shawl Suit



D.NO-1509

Pashmina

Shawl Suit



D.NO-1501

Pashmina

Shawl Suit



D.NO-1503



© Cultural and Heritage Commission of India. All rights reserved. No part of this publication may be reproduced, stored in a retrieval system, or transmitted, in any form or by any means, electronic, mechanical, photocopying, recording, or by any information storage and retrieval system, without the prior written permission of the publisher.



Pashmina
Shawl Suit

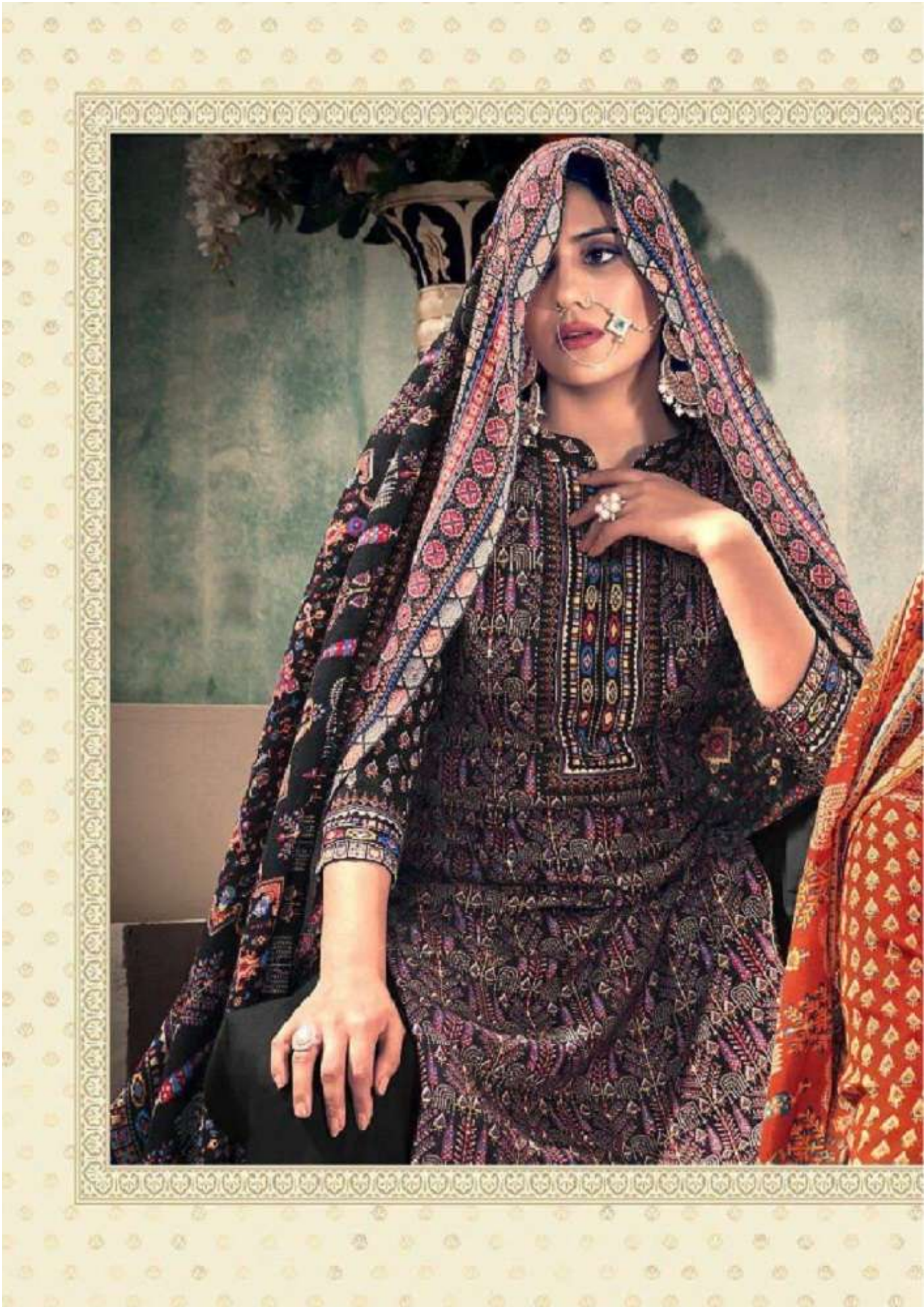


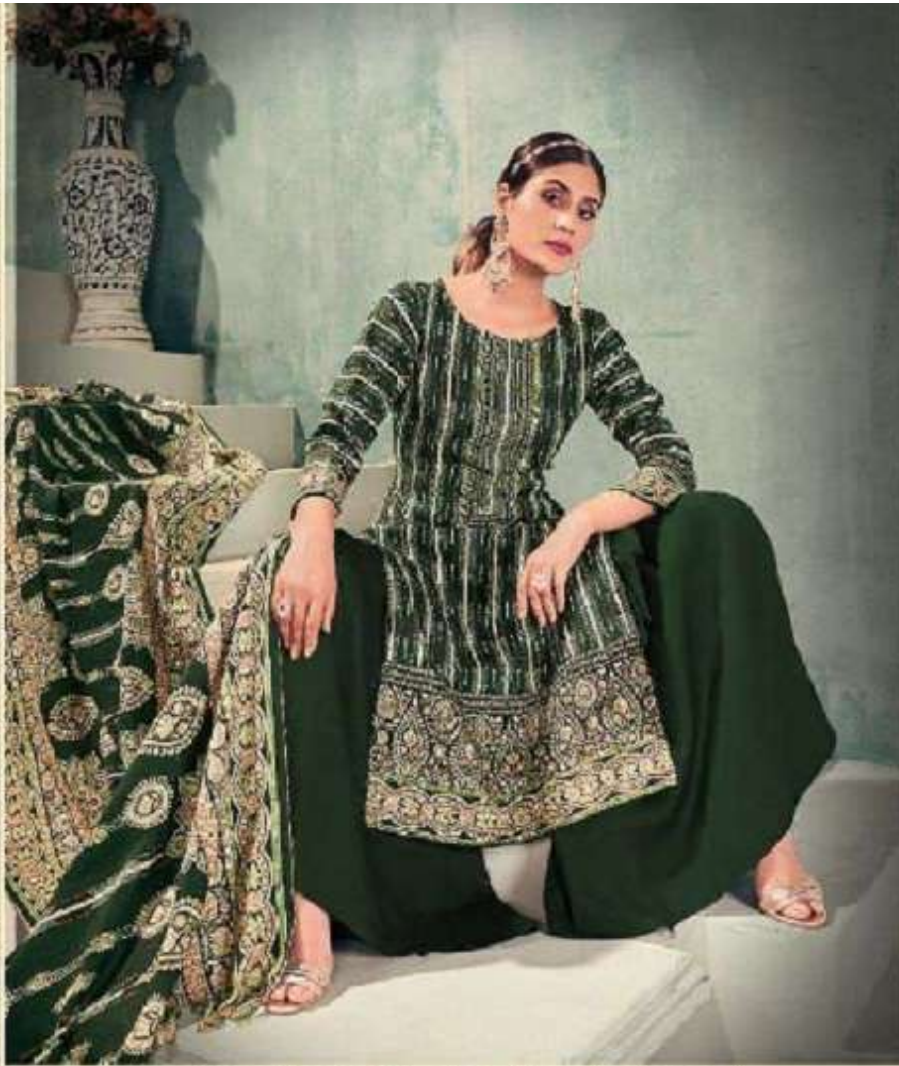
D.NO-1505

Pashmina
Shawl Suit



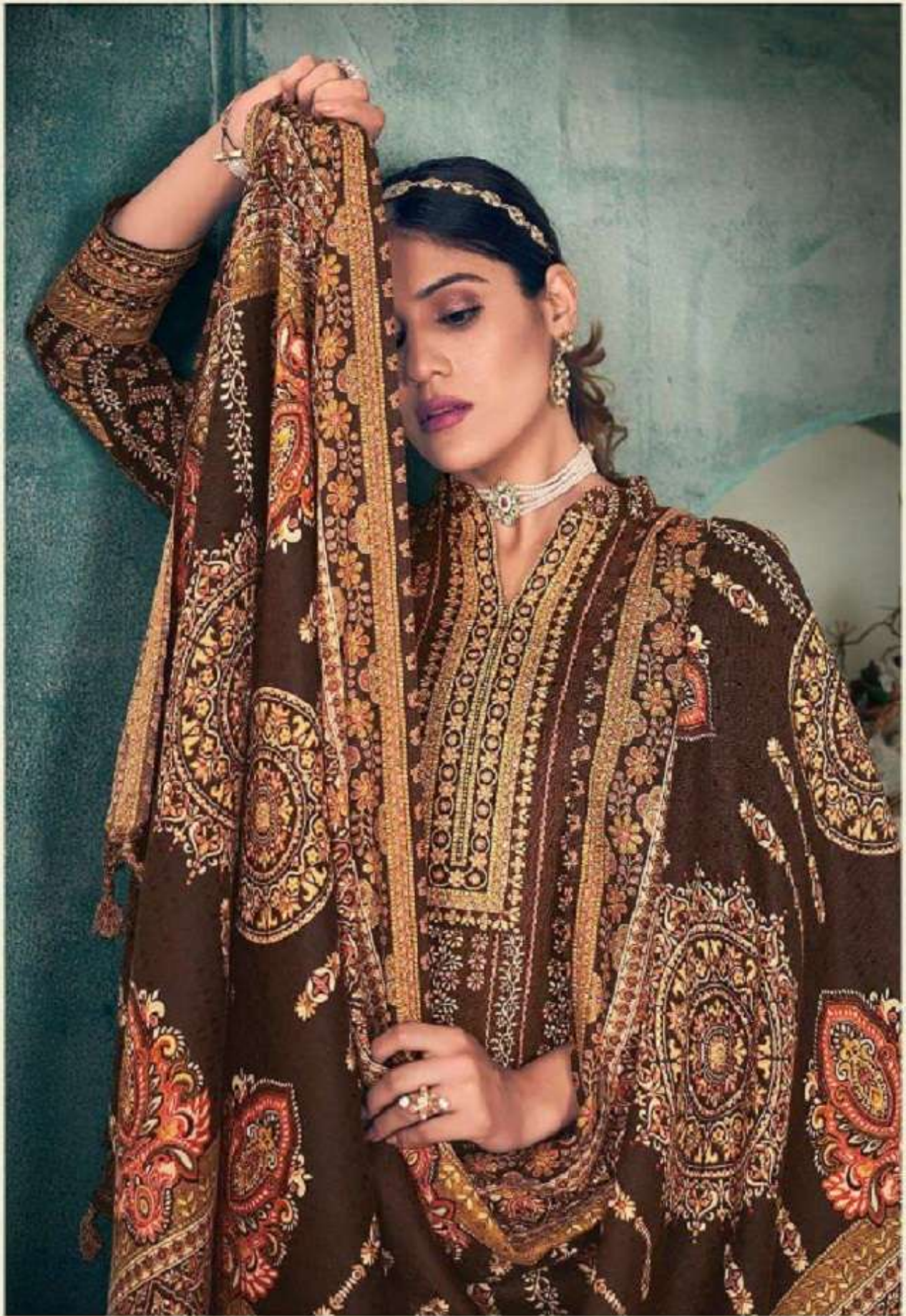
D.NO-1510





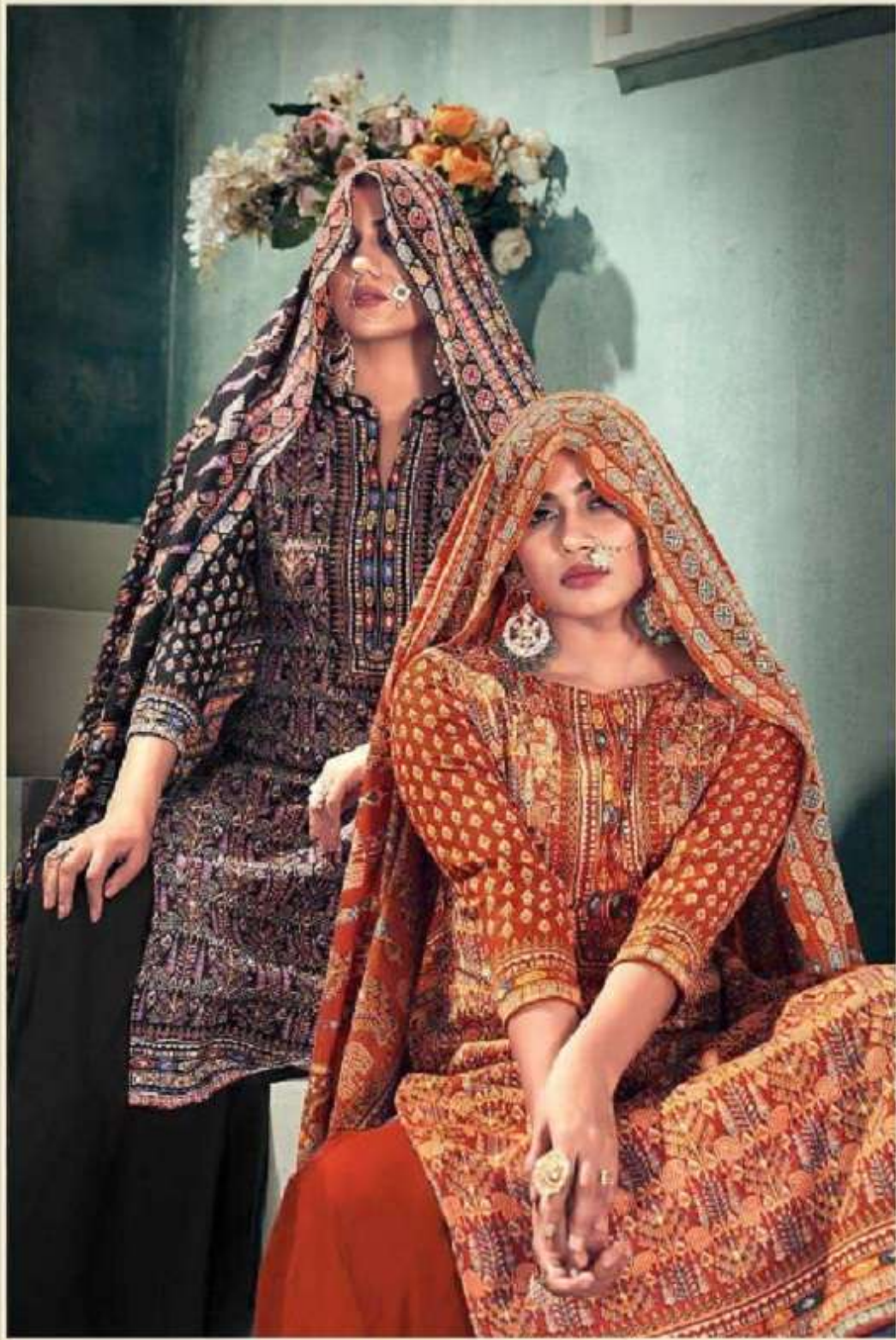
The perfect matching accessory for you is not the jewelry but your smile.







A Culture and Tradition by the best eye of 2024 by India. India is a country with a rich and diverse culture and heritage. It is a country of contrasts and contradictions. It is a country of beauty and grace. It is a country of hope and dreams.



Pashmina

Shawl Suit



D.NO-1502

Pashmina

Shawl Suit



D.NO-1504

Pashmina
Ehwal Suit



D.NO-1508





PIC • COLLAGE

Pashmina

Shawl Suit



D.NO-1507



«Different cultures come together in a tribute to Fashion's biggest moment this season.»

