







D.NO.239 A

**TOP - CHINON SILK EMBROIDERED
WITH JARKAN WORK**

DUPATTA- CHINON EMBROIDERED

BOTTOM- HEAVY DULL SANTOON

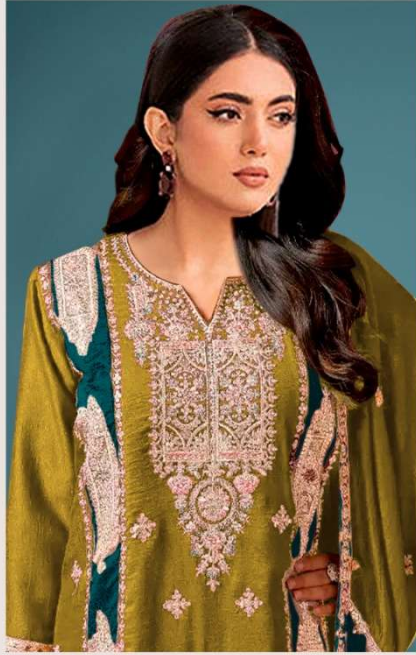
INNER - HEAVY DULL SANTOON



CARE INTRUCTIONS

- DRY CLEAN RECOMMENDED
- DO NOT OVEREXPOSE DAMP FABRIC TO STRONG SUNLIGHT
- DO NOT USE ANYTYPE OF BLEACH OR STAIN REMOVING CHEMICALS
- IRON AT MODERATE TEMPERATURE





D.NO.239 C

**TOP - CHINON SILK EMBROIDERED
WITH JARKAN WORK**

DUPATTA- CHINON EMBROIDERED

BOTTOM- HEAVY DULL SANTOON

INNER - HEAVY DULL SANTOON



CARE INTRUCTIONS

- DRY CLEAN RECOMMENDED
- DO NOT OVEREXPOSE DAMP FABRIC TO STRONG SUNLIGHT
- DO NOT USE ANYTYPE OF BLEACH OR STAIN REMOVING CHEMICALS
- IRON AT MODERATE TEMPERATURE





D.No 239 A



D.No 239-B



D.No 239-C



D.NO.239 B

**TOP - CHINON SILK EMBROIDERED
WITH JARKAN WORK**

DUPATTA- CHINON EMBROIDERED

**BOTTOM- HEAVY DULL SANTOON
INNER - HEAVY DULL SANTOON**



CARE INTRUCTIONS

- DRY CLEAN RECOMMENDED
- DO NOT OVEREXPOSE DAMP FABRIC TO STRONG SUNLIGHT
- DO NOT USE ANYTYPE OF BLEACH OR STAIN REMOVING CHEMICALS
- IRON AT MODERATE TEMPERATURE

