







FABRIC DETAIL
TOP :- ORGANZA
DUPATTA :- ORGANZA
BOTTOM :- DULL SANTOON
TOP/INNER :- DULL SANTOON

D.No-1082-A



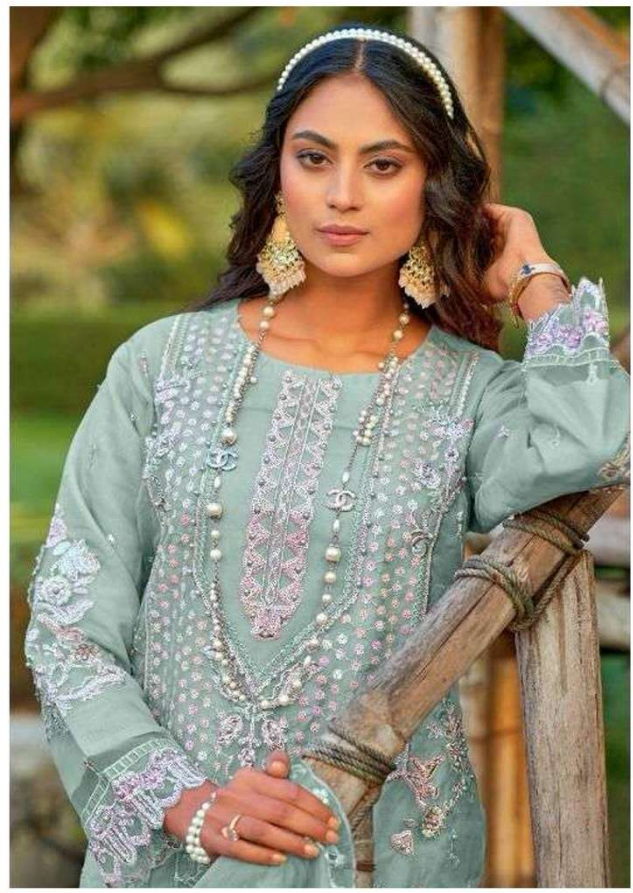
FABRIC DETAIL
TOP :- ORGANZA
DUPATTA :- ORGANZA
BOTTOM :- DULL SANTOON
TOP/INNER :- DULL SANTOON

D.No-1082-D



FABRIC DETAIL
TOP :- ORGANZA
DUPATTA :- ORGANZA
BOTTOM :- DULL SANTOON
TOP/INNER :- DULL SANTOON

D.No-1082-C



FABRIC DETAIL
TOP :- ORGANZA
DUPATTA :- ORGANZA
BOTTOM :- DULL SANTOON
TOP/INNER :- DULL SANTOON

D.No-1082-B



TOP :- ORGANZA
DUPATTA :- ORGANZA
BOTTOM :- DULL SANTOON
TOP/INNER :- DULL SANTOON



1082-A



1082-B



1082-C



1082-D